

Leg 5 Dewdney to Dick's Cabin

120 Mile and Relay = 24 km/15 mi

From the Whitecloud Aid Station, this leg travels back along Whitecloud Trail to the Dewdney Trail then turns left. You reach Tulameen Camp and continue along Dewdney to Whipsaw Jeep Road to Dick's Cabin Aid Station. Views, stream crossings, subalpine.

50 and 70 Mile =17 km/10.5 mi

From the Whitecloud Trail Junction, this leg travels along Dewdney Trail to Tulameen Camp and continues along Dewdney to Whipsaw Jeep Road and Dick's Cabin Aid Station. Views, stream crossings, subalpine.

Tulameen Camp Aid Station

- 120 Mile and Relay follow Whitecloud Trail back to the Dewdney Trail, turn left and reach the camp after 1 km.
- 50 and 70 Mile, reach the camp about 1 km after the Whitecloud Trail junction.



- Just after Saltlick Camp, take the next RIGHT to stay on Dewdney Trail.
- Pass by Hubbard Camp.



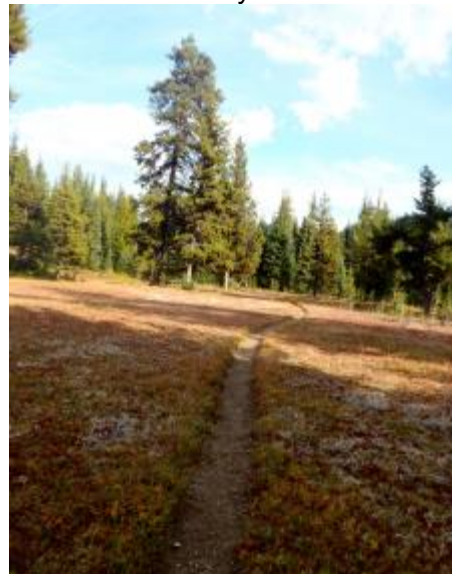
- Head to Paddy's Pond.

Dewdney Trail

- Warburton Peak is on your left.



- Continue along Dewdney Trail and pass Saltlick Camp.



Whipsaw Jeep Road

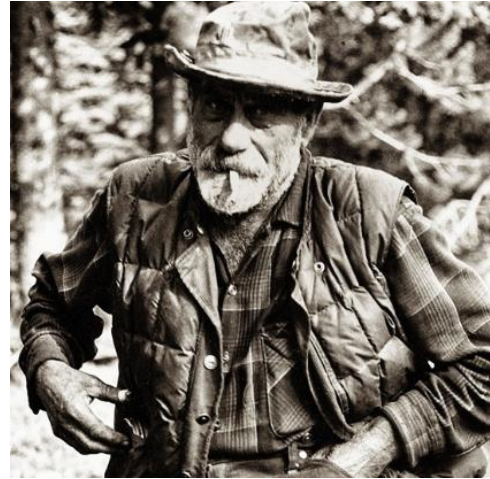
- Where the trail intersects with a road, near Paddy's Pond, turn RIGHT onto Whipsaw Jeep Road.
- The road skirts by Skaist Mountain.



- Stay on that road until you come to Dick's Cabin Aid Station.

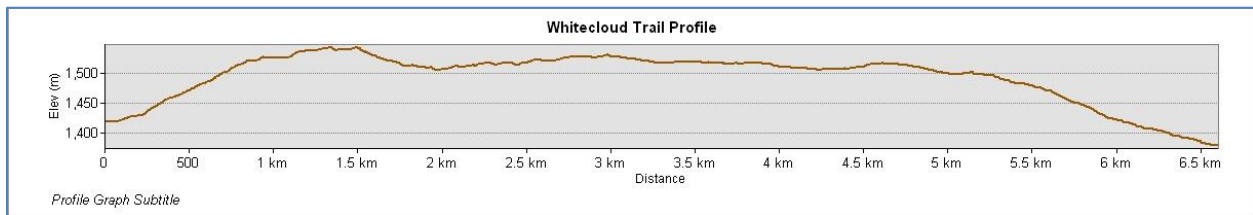
Dick's Cabin Aid Station

- Relay exchange.



Dick Holding

Whitecloud Profile for 120 Mile and Relay (reverse this profile)



Dewdney to Dick's Cabin (from Whitecloud Trail Junction)

